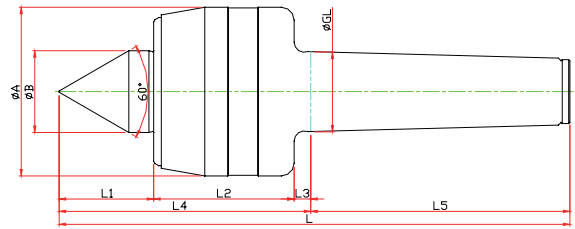


# NCP TYPE

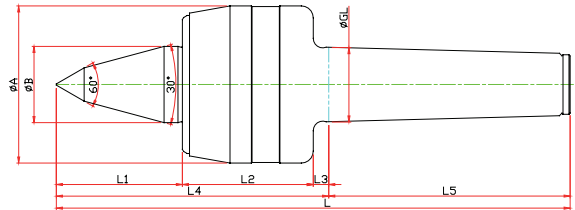
## ► NCP-TYPE



Model	Order Number	Morse Taper	Dimension										Weight MAX.	R.P.M MAX.	Run Out
			GL	A	B	L1	L2	L3	L4	L5	L				
LC-3NCP	030003	NO.3	23,825	50	22	27	45	5	77	81	158	800	4800	0,003	
LC-4NCP	030004	NO.4	31,267	66	32	37	55	6,5	98,5	101,5	200	1300	3800	0,003	
LC-5NCP	030005	NO.5	44,399	82	40	45	65	6,5	116,5	129,5	246	1900	3400	0,005	
LC-6NCP	030006	NO.6	63,384	100	45	65	80	8	153	182	335	2500	3000	0,005	

## ► NCPB-TYPE

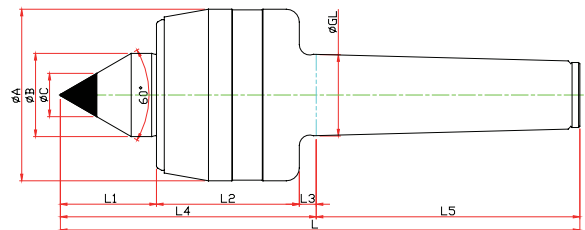
※ SHAFT EXTENTION(Minimize the bite-interference)



Model	Order Number	Morse Taper	Dimension										Weight MAX.	R.P.M MAX.	Run Out
			GL	A	B	b	L1	L2	L3	L4	L5	L			
LC-3NCPB	031003	NO.3	23,825	50	22	10	27	45	5	97	81	178	800	4800	0,003
LC-4NCPB	031004	NO.4	31,267	66	32	14	37	55	6,5	114,5	101,5	216	1300	3800	0,003
LC-5NCPB	031005	NO.5	44,399	82	40	16	45	65	6,5	136,5	129,5	266	1900	3400	0,005
LC-6NCPB	031006	NO.6	63,384	100	45	18	65	80	8	166	182	348	2500	3000	0,005

## ► NCPC-TYPE

※ Carbide Type

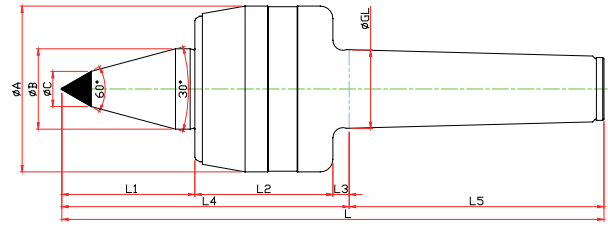


Model	Order Number	Morse Taper	Dimension										Weight MAX.	R.P.M MAX.	Run Out
			GL	A	B	L1	L2	L3	L4	L5	C	L			
LC-3NCPC	030103	NO.3	23,825	50	22	27	45	5	77	81	10	158	800	4800	0,003
LC-4NCPC	030104	NO.4	31,267	66	32	37	55	6,5	98,5	101,5	14	200	1300	3800	0,003
LC-5NCPC	030105	NO.5	44,399	82	40	45	65	6,5	116,5	129,5	18	246	1900	3400	0,005
LC-6NCPC	030106	NO.6	63,384	100	45	65	80	8	153	182	25	335	2500	3000	0,005

# NCP TYPE

## ▶ NCPBC-TYPE

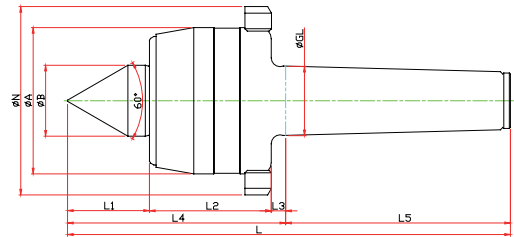
- ※ SHAFT EXTENTION(Minimize the bite-interference)
- ※ Carbide Type



Model	Order Number	Morse Taper	Dimension											Weight MAX.	R.P.M MAX.	Run Out
			GL	A	B	L1	L2	L3	L4	L5	C	L				
LC-3NCPBC	031103	NO.3	23,825	50	22	27	45	5	97	81	10	178	800	4800	0.003	
LC-4NCPBC	031104	NO.4	31,267	66	32	37	55	6.5	114.5	101.5	14	216	1300	3800	0.003	
LC-5NCPBC	031105	NO.5	44,399	82	40	45	65	6.5	136.5	129.5	16	266	1900	3400	0.005	
LC-6NCPBC	031106	NO.6	63,384	100	45	65	80	8	166	182	18	348	2500	3000	0.005	

## ▶ NCPN-TYPE

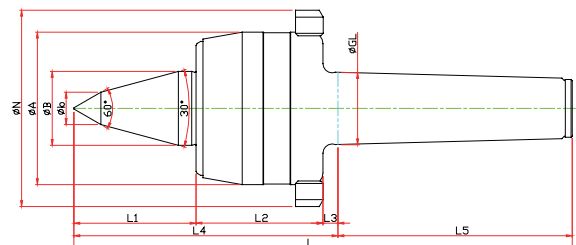
- ※ Nut Type



Model	Order Number	Morse Taper	Dimension											Weight MAX.	R.P.M MAX.	Run Out
			GL	A	B	L1	L2	L3	L4	L5	N	L				
LC-3NCPN	030013	NO.3	23,825	50	22	27	45	5	77	81	70	158	800	4800	0.003	
LC-4NCPN	030014	NO.4	31,267	66	32	37	55	6.5	98.5	101.5	85	200	1300	3800	0.003	
LC-5NCPN	030015	NO.5	44,399	82	40	45	65	6.5	116.5	129.5	105	246	1900	3400	0.005	
LC-6NCPN	030016	NO.6	63,384	100	45	65	80	8	153	182	130	335	2500	3000	0.005	

## ▶ NCPBN-TYPE

- ※ SHAFT EXTENTION(Minimize the bite-interference)
- ※ Nut Type

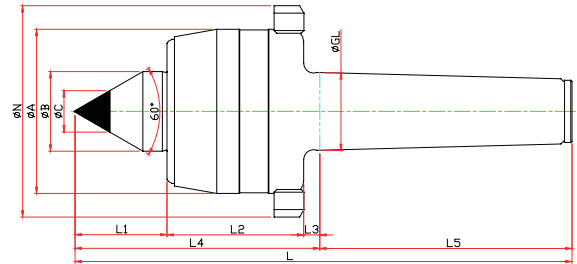


Model	Order Number	Morse Taper	Dimension											Weight MAX.	R.P.M MAX.	Run Out
			GL	A	B	b	L1	L2	L3	L4	L5	N	L			
LC-3NCPBN	031013	NO.3	23,825	50	22	10	47	45	5	97	81	70	178	800	4800	0.003
LC-4NCPBN	031014	NO.4	31,267	66	32	14	53	55	6.5	114.5	101.5	85	216	1300	3800	0.003
LC-5NCPBN	031015	NO.5	44,399	82	40	16	65	65	6.5	136.5	129.5	105	266	1900	3400	0.005
LC-6NCPBN	031016	NO.6	63,384	100	45	18	78	80	8	166	182	130	348	2500	3000	0.005

# NCP TYPE

## ▶ NCPCN-TYPE

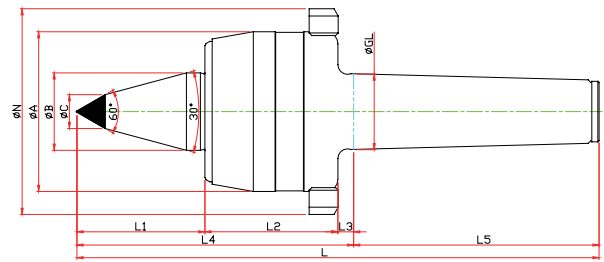
※ Nut, Carbide Type Type



Model	Order Number	Morse Taper	Dimension											Weight MAX.	R.P.M MAX.	Run Out
			GL	A	B	L1	L2	L3	L4	L5	C	N	L			
LC-3NCPCN	030113	NO.3	23.825	50	22	27	45	5	77	81	10	70	158	800	4800	0.003
LC-4NCPCN	030114	NO.4	31.267	66	32	37	55	6.5	98.5	101.5	14	85	200	1300	3800	0.003
LC-5NCPCN	030115	NO.5	44.399	82	40	45	65	6.5	116.5	129.5	18	105	246	1900	3400	0.005
LC-6NCPCN	030116	NO.6	63.384	100	45	65	80	8	153	182	25	130	335	2500	3000	0.005

## ▶ NCPBCN-TYPE

※ SHAFT EXTENSION(Minimize the bite-interference)  
 ※ Nut, Carbide Type Type



Model	Order Number	Morse Taper	Dimension											Weight MAX.	R.P.M MAX.	Run Out
			GL	A	B	L1	L2	L3	L4	L5	C	N	L			
LC-3NCPBCN	031113	NO.3	23.825	50	22	47	45	5	97	81	10	70	178	800	4800	0.003
LC-4NCPBCN	031114	NO.4	31.267	66	32	53	55	6.5	114.5	101.5	14	85	216	1300	3800	0.003
LC-5NCPBCN	031115	NO.5	44.399	82	40	65	65	6.5	136.5	129.5	16	105	266	1900	3400	0.005
LC-6NCPBCN	031116	NO.6	63.384	100	45	78	80	8	166	182	25	130	348	2500	3000	0.005

## ▶ NCP SPECIAL

※ Customized-special production for user's condition

