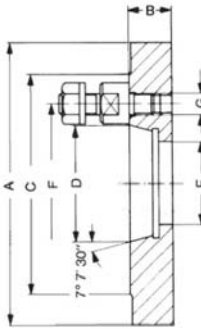


# Adapter plates

A09

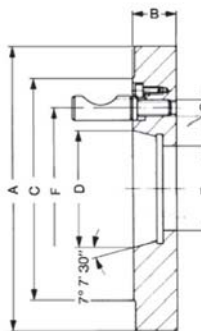
Short-taper adapter plate ISO 702-3 (DIN 55027) and 55022 with studs and locknuts



| Item no. | Ø A mm | Taper | Inch  | B mm | C mm | D mm    | E mm | F mm  | G   | Weight approx. kg |
|----------|--------|-------|-------|------|------|---------|------|-------|-----|-------------------|
| 319650   | 125    | 3     | 5     | 19   | 102  | 53,975  | 40   | 75    | M10 | 2,3               |
| 319651   | 125    | 4     | 5     | 19   | 112  | 63,513  | 40   | 85    | M10 | 2,2               |
| 319652   | 160    | 3     | 6 ¼   | 21   | 102  | 53,975  | 40   | 75    | M10 | 3,9               |
| 319653   | 160    | 4     | 6 ¼   | 21   | 112  | 63,513  | 40   | 85    | M10 | 3,9               |
| 319654   | 160    | 5     | 6 ¼   | 21   | 135  | 82,563  | 40   | 104,8 | M10 | 4,6               |
| 319655   | 200    | 4     | 8     | 21   | 112  | 63,513  | 50   | 85    | M10 | 6,4               |
| 319656   | 200    | 5     | 8     | 21   | 135  | 82,563  | 50   | 104,8 | M10 | 7,4               |
| 319657   | 200    | 6     | 8     | 23   | 170  | 106,375 | 50   | 133,4 | M12 | 8,4               |
| 319658   | 250    | 4     | 1     | 21   | 112  | 63,513  | 61   | 85    | M10 | 10,2              |
| 319659   | 250    | 5     | 10    | 21   | 135  | 82,563  | 63   | 104,8 | M10 | 11,6              |
| 319660   | 250    | 6     | 10    | 23   | 170  | 106,375 | 63   | 133,4 | M12 | 13,3              |
| 319661   | 250    | 8     | 10    | 26   | 220  | 139,719 | 63   | 171,4 | M16 | 13,8              |
| 319662   | 315    | 5     | 12 ¼  | 26   | 135  | 82,563  | 63   | 104,8 | M10 | 18,6              |
| 319663   | 315    | 6     | 12 ¼  | 26   | 170  | 106,375 | 63   | 133,4 | M12 | 21,5              |
| 319664   | 315    | 8     | 12 ¼  | 26   | 220  | 139,719 | 63   | 171,4 | M16 | 22,6              |
| 319665   | 315    | 11    | 12 ¼  | 33   | 290  | 196,869 | 63   | 235   | M20 | 25,2              |
| 319666   | 400    | 6     | 15 ¾  | 31   | 170  | 106,375 | 63   | 133,4 | M12 | 35                |
| 319667   | 400    | 8     | 15,75 | 31   | 220  | 139,719 | 63   | 171,4 | M16 | 37,2              |
| 319668   | 400    | 11    | 15,75 | 31   | 290  | 196,869 | 63   | 235   | M20 | 42                |
| 319669   | 400    | 15    | 15,75 | 33   | 400  | 285,775 | 63   | 330,2 | M24 | 42,1              |
| 319670   | 500    | 8     | 20    | 41   | 220  | 139,719 | 80   | 171,4 | M16 | 62                |
| 319671   | 500    | 11    | 20    | 41   | 290  | 196,869 | 80   | 235   | M20 | 67                |
| 319672   | 500    | 15    | 20    | 41   | 400  | 285,775 | 80   | 330,2 | M24 | 68                |

A09

Short-taper adapter plate ISO 702-2 (DIN 55029) and ASA B 5.9 D1, Camlock



| Item no. | Ø A mm | Taper | Inch  | B mm | C mm  | D mm    | E mm | F mm  | G         | Weight approx. kg |
|----------|--------|-------|-------|------|-------|---------|------|-------|-----------|-------------------|
| 319673   | 125    | 3     | 5     | 27   | 92,1  | 53,975  | 40   | 70,66 | 7/16 - 20 | 2,3               |
| 319674   | 125    | 4     | 5     | 28   | 117,5 | 63,513  | 40   | 82,55 | 7/16 - 20 | 2,2               |
| 319675   | 160    | 3     | 6 ¼   | 27   | 92,1  | 53,975  | 40   | 70,66 | 7/16 - 20 | 3,9               |
| 319676   | 160    | 4     | 6 ¼   | 28   | 117,5 | 63,513  | 40   | 82,55 | 7/16 - 20 | 3,9               |
| 319677   | 160    | 5     | 6 ¼   | 31   | 146   | 82,563  | 40   | 104,8 | ½ - 20    | 4,6               |
| 319678   | 200    | 4     | 8     | 28   | 117,5 | 63,513  | 50   | 82,55 | 7/16 - 20 | 6,4               |
| 319679   | 200    | 5     | 8     | 31   | 146   | 82,563  | 50   | 104,8 | ½ - 20    | 7,4               |
| 319680   | 200    | 6     | 8     | 36   | 181   | 106,375 | 50   | 133,4 | 5/8 - 18  | 8,4               |
| 319681   | 250    | 4     | 1     | 28   | 117,5 | 63,513  | 61   | 82,55 | 7/16 - 20 | 10,2              |
| 319682   | 250    | 5     | 10    | 31   | 146   | 82,563  | 63   | 104,8 | ½ - 20    | 11,6              |
| 319683   | 250    | 6     | 10    | 36   | 181   | 106,375 | 63   | 133,4 | 5/8 - 18  | 13,3              |
| 319684   | 250    | 8     | 10    | 39   | 225,4 | 139,719 | 63   | 171,4 | ¾ - 16    | 13,8              |
| 319685   | 315    | 5     | 12 ¼  | 31   | 146   | 82,563  | 63   | 104,8 | ½ - 20    | 18,6              |
| 319686   | 315    | 6     | 12 ¼  | 36   | 181   | 106,375 | 63   | 133,4 | 5/8 - 18  | 21,5              |
| 319687   | 315    | 8     | 12 ¼  | 39   | 225,4 | 139,719 | 63   | 171,4 | ¾ - 16    | 22,6              |
| 319688   | 315    | 11    | 12 ¼  | 45   | 298,4 | 196,869 | 63   | 235   | 7/8 - 14  | 25,2              |
| 319689   | 400    | 6     | 15 ¾  | 36   | 181   | 106,375 | 63   | 133,4 | 5/8 - 18  | 35                |
| 319690   | 400    | 8     | 15,75 | 39   | 225,4 | 139,719 | 63   | 171,4 | ¾ - 16    | 37,2              |
| 319691   | 400    | 11    | 15,75 | 45   | 298,4 | 196,869 | 63   | 235   | 7/8 - 14  | 42                |
| 319692   | 400    | 15    | 15,75 | 50   | 403   | 285,775 | 63   | 330,2 | 1 - 14    | 42,1              |
| 319693   | 500    | 8     | 20    | 41   | 225,4 | 139,719 | 80   | 171,4 | ¾ - 16    | 62                |
| 319694   | 500    | 11    | 20    | 45   | 298,4 | 196,869 | 80   | 235   | 7/8 - 14  | 67                |
| 319695   | 500    | 15    | 20    | 50   | 403   | 285,775 | 80   | 330,2 | 1 - 14    | 68                |

Further sizes and designs, such as ISO 702-1, available on request!

Adapter plates