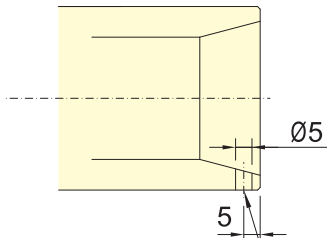
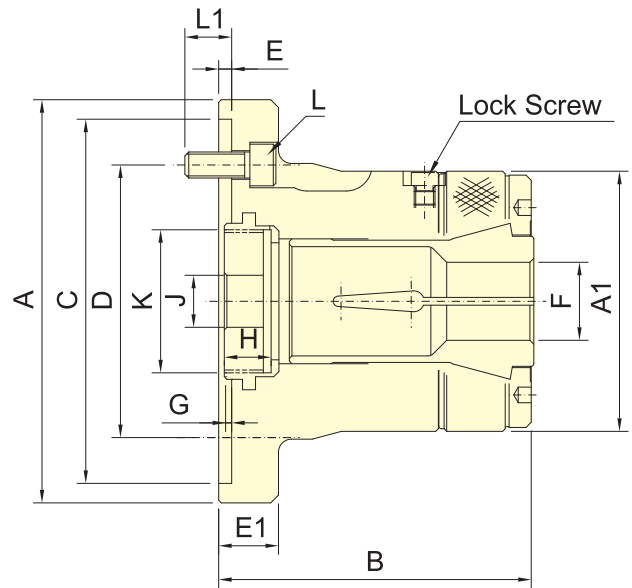




Application/customer benefits

- It's a PUSH type collet are used mainly on turning, CNC, special purpose machines and other, ect.
- High clamping accuracy, high speed and construction of high rigidity.
- The installation is the same as "Thru-hole power chuck" and they are replaceable with each other. No need to change the "Draw tube".
- Sealed against swarf, chips and coolant.
- The collet used must accord with DIN 6343.
- Patent numbers :  
 Taiwan : PAT.M272602 / PAT.M380842    China : PAT.ZL2010.2.011376.2



The hole and lock pin is option.  
 Note:While clamp square or hexagonal material, please order hole and lock pin of collet chuck.

\* Subject to technical changes.

Specifications

Model	Plunger stroke (mm)	Max. Chucking Capacity (mm)			Max. D.B. pull kN (kgf)	Max. clamping force kN(kgf)	Max. speed min <sup>-1</sup> (r.p.m.)	I kg · m <sup>2</sup>	Weight (kg)	Matching Stell Collet	Matching cyl.	Max. pressure MPa (kgf/cm <sup>2</sup> )
		Round	Hexagom	Square								
CL-26	4.5	3~26	4~22	4~18	17.6(1800)	37.9(3870)	8000	0.04	4.3	161E	TK-A533	2.6(26)
CL-30	4.5	3~30	4~26	4~20	19.6(2000)	42.1(4300)	8000	0.038	4.2	163E	TK-A533	2.9(29)
CL-36	6	3~36	6~32	6~26	22.5(2300)	48.5(4950)	6000	0.062	7	171E	TK-C643	2.5(25)
C L-42	6	3~42	6~36	6~29	24.5(2500)	52.9(5400)	6000	0.06	6.9	173E	TK-C643	2.9(29)
CL-52	6	5~52	8~45	7~36	27.4(2800)	59.0(6020)	6000	0.101	14.3	177E	TK-A853	2.3(23)
CL-6017	6	5~60	8~52	7~42	29.4(3000)	63.7(6500)	5000	0.098	14.1	185E	TK-1068	1.8(18)
CL-6022	6	5~60	8~52	7~42	29.4(3000)	63.7(6500)	5000	0.126	16.3	185E	TK-1068	1.8(18)
CL-80	6	20~80	18~69	15~56	34.3(3500)	71.5(7300)	4000	0.108	17.8	193E	TK-1287	1.6(16)

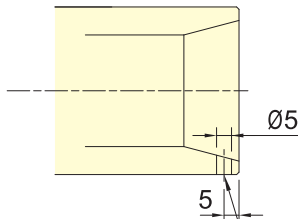
Dimensions

Model	A	A1	B	C(H6)	D	E	E1	F max.	F min.	G max.	G rmin.	H	J	K max.	L	L1
CL-26	120	85	100	110	82.6	4	23	26	3	7	2.5	15	12	M40x1.5	3~M10x25	16
CL-30	120	85	100	110	82.6	4	23	30	3	7	2.5	15	12	M40x1.5	3~M10x25	16
CL-36	155	100	120	140	104.8	5	23	36	3	7	1	17.5	20	M55x2	3~M10x25	18
CL-42	155	100	120	140	104.8	5	23	42	3	7	1	17.5	20	M55x2	3~M10x25	18
CL-52	185	130	145.5	170	133.4	5	27	52	5	9	3	24	45	M60x2	6~M12x30	20
CL-6017	185	130	145.5	170	133.4	5	27	60	5	9	3	24	45	M75x2	6~M12x30	20
CL-6022	234	130	142	220	171.5	5	32	60	5	13	7	24	45	M85x2	6~M16x30	20
CL-80	234	156	163	220	171.5	5	32	80	20	15.5	9.5	22	45	M100x2	6~M16x30	20

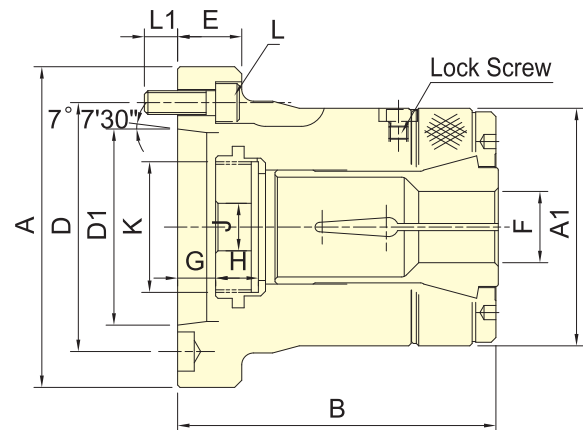


Application/customer benefits

- It's a PUSH type collet are used mainly on turning, CNC, special purpose machines and other, ect.
- High clamping accuracy, high speed and construction of high rigidity.
- The installation is the same as "Thru-hole power chuck" and they are replaceable with each other. No need to change the "Draw tube".
- Sealed against swarf, chips and coolant.
- The collet used must accord with DIN 6343.
- Patent numbers : Taiwan : PAT.M272602 / PAT.M380842



The hole and lock pin is option.  
Note:While clamp square or hexagonal material,please order hole and lock pin of collet chuck.



\* Subject to technical changes.

COLLET CHUCKS

Specifications

Model	Plunger stroke (mm)	Max. Chucking Capacity (mm)	Max. Chucking Capacity (mm)			Max. D.B. pull kN (kgf)	Max. clamping force kN (kgf)	Max. speed min <sup>-1</sup> (r.p.m.)	I kg · m <sup>2</sup>	Weight (kg)	Matching Stell Collet	Matching cyl.	Max. pressure MPa (kgf/cm <sup>2</sup> )
			Round	Hexagom	Square								
CL-26 A4	4.5	3~26	4~22	4~18	17.6(1800)	37.9(3870)	8000	0.04	4.2	161E	TK-A533	2.6(26)	
CL-30 A4	4.5	3~30	4~26	4~20	19.6(2000)	42.1(4300)	8000	0.038	4.1	163E	TK-A533	2.9(29)	
CL-36 A5	6	3~36	6~32	6~26	22.5(2300)	48.5(4950)	6000	0.058	6.3	171E	TK-C643	2.5(25)	
CL-42 A5	6	3~42	6~36	6~29	24.5(2500)	52.9(5400)	6000	0.057	6.1	173E	TK-C643	2.9(29)	
CL-42 A6	6	3~42	6~36	6~29	24.5(2500)	52.9(5400)	6000	0.061	7.5	173E	TK-C643	2.9(29)	
CL-52 A6	6	5~52	8~45	7~36	27.4(2800)	59.0(6020)	6000	0.093	13.8	177E	TK-A853	2.3(23)	
CL-60 A6	6	5~60	8~52	7~42	29.4(3000)	63.7(6500)	5000	0.091	13.5	185E	TK-1068	1.8(18)	
CL-60 A8	6	5~60	8~52	7~42	29.4(3000)	63.7(6500)	5000	0.104	14.5	185E	TK-1068	1.8(18)	
CL-80 A8	6	20~80	18~69	15~56	34.3(3500)	71.5(7300)	4000	0.12	19.8	193E	TK-1287	1.6(16)	

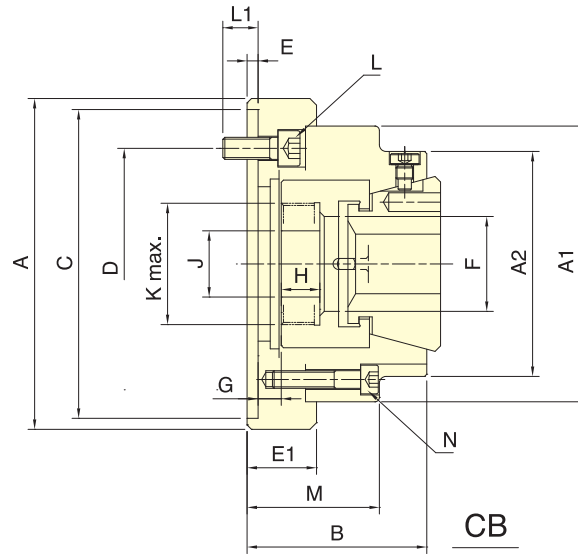
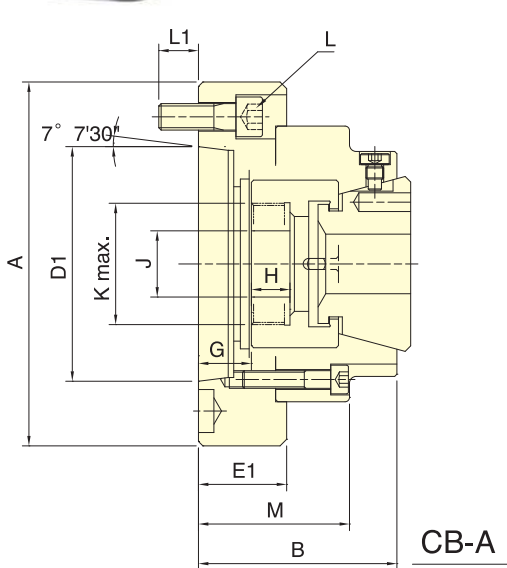
Dimensions

Model	A	A1	B	D	D1	E	F max.	F min.	G max.	G min.	H	J	K max.	L	L1
CL-26 A4	110	85	108	82.6	63.51	25	26	3	9.5	5	15	12	M40x1.5	3~M10x30	15
CL-30 A4	110	85	108	82.6	63.51	25	30	3	9.5	5	15	12	M40x1.5	3~M10x30	15
CL-36 A5	135	100	130	104.8	82.56	27	36	3	14	8	17.5	20	M55x2	4~M10x30	14
CL-42 A5	135	100	130	104.8	82.56	27	42	3	14	8	17.5	20	M55x2	4~M10x30	14
CL-42 A6	165	100	130	133.4	106.38	32	42	3	17	11	17.5	20	M60x2	4~M12x35	16
CL-52 A6	170	130	154	133.4	106.38	27	52	5	10.5	4.5	24	45	M60x2	4~M12x35	20
CL-60 A6	170	130	154	133.4	106.38	27	60	5	10.5	4.5	24	45	M75x2	4~M12x35	20
CL-60 A8	210	130	147.5	171.5	139.72	35	60	5	3.5	-2.5	24	45	M85x2	4~M16x40	22
CL-80 A8	210	156	175	171.5	139.72	35	80	20	7.5	1.5	22	45	M100x2	6~M16x40	22



### Application/customer benefits

- It's a DRAW type collet are used mainly on turning, CNC, special purpose machines and other, ect.
- High clamping accuracy, high speed and construction of high rigidity.
- The installation is the same as "Thru-hole power chuck" and they are replaceable with each other, no need to change the "Draw tube".
- This is a completely sealed design, which prevents coolant and chips from entering the spindle.
- J vale is the hole diameter of blank draw nut, K is the maximum thread specification, and it could be customize.



CB-A

CB

### Specifications

\* Subject to technical changes.

Model	Plunger stroke (mm)	Max. Chucking Capacity (mm)			Max. D.B. pull kN (kgf)	Max. clamping force kN (kgf)	Max. speed min <sup>-1</sup> (r.p.m.)	Weight (kg)	Matching Stell Collet	Matching cyl.	Max. pressure MPa (kgf/cm <sup>2</sup> )
		Round	Square	Hexagom							
CB-42	4.5	4~42	7~30	7~36	34.3(3500)	78.4(8000)	7000	6.5	RG-42	TK-B846	2.8(28)
CB-42 A5	4.5	4~42	7~30	7~36	34.3(3500)	78.4(8000)	7000	6.2	RG-42	TK-B846	2.8(28)
CB-42 A6	4.5	4~42	7~30	7~36	34.3(3500)	78.4(8000)	7000	7.4	RG-42	TK-B846	2.8(28)
CB-52	4.5	4~52	7~36	7~45	39.2(4000)	92.1(9400)	7000	6	RG-52	TK-A853	3.2(32)
CB-5217	4.5	4~52	7~36	7~45	39.2(4000)	92.1(9400)	7000	9.6	RG-52	TK-A853	3.2(32)
CB-52 A5	4.5	4~52	7~36	7~45	39.2(4000)	92.1(9400)	7000	6.5	RG-52	TK-A853	3.2(32)
CB-52 A6	4.5	4~52	7~36	7~45	39.2(4000)	92.1(9400)	7000	7.8	RG-52	TK-A853	3.2(32)
CB-65	4.5	4~65	8~46	8~56	44.1(4500)	103(10500)	5500	15	RG-65	TK-1068	3.0(30)
CB-65 A6	4.5	4~65	8~46	8~56	44.1(4500)	103(10500)	5500	13.6	RG-65	TK-1068	3.0(30)
CB-65 A8	4.5	4~65	8~46	8~56	44.1(4500)	103(10500)	5500	17.6	RG-65	TK-1068	3.0(30)
CB-80	6	5~80	8~56	8~68	50.0(5100)	115(11730)	5500	19	RG-80	TK-1287	2.3(23)
CB-80 A8	6	5~80	8~56	8~68	50.0(5100)	115(11730)	5500	19	RG-80	TK-1287	2.3(23)

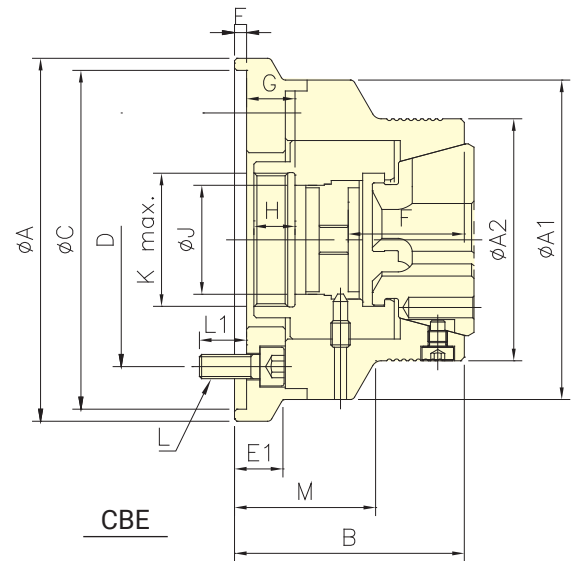
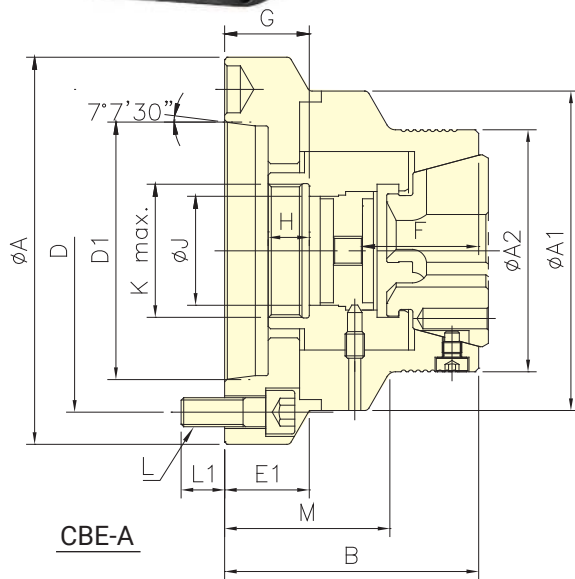
### Dimensions

Model	A	A1	A2	B	C(H6)	D	D1	E	E1	F	G max.	G min.	H	J	K max.	L	L1	M	N
CB-42	150	125	102	81.5	140	104.8	-	5	31	43	10.5	6	17.5	30	M55x2	3~M10x25	11	60	4~M8
CB-42 A5	140	125	102	91.5	-	104.8	82.56	-	41.5	43	25.5	21	17.5	30	M55x2	4~M10x25	12	70	4~M8
CB-42 A6	165	125	102	91.5	-	133.4	106.38	-	45	43	29	24.5	17.5	30	M55x2	4~M12x35	18	73.5	4~M8
CB-52	150	125	102	83.5	140	104.8	-	5	31.5	53	11	6.5	17.5	30	M60x2	4~M10x25	16	62.5	4~M8
CB-5217	180	125	102	87	170	133.4	-	5	35	53	14.5	10	17.5	30	M60x2	4~M12x30	18	66	4~M8
CB-52 A5	140	125	102	93.5	-	104.8	82.56	-	41.5	53	26	21.5	17.5	30	M60x2	4~M10x30	16	72.5	4~M8
CB-52 A6	165	125	102	99	-	133.4	106.38	-	47	53	31.5	27	17.5	30	M60x2	6~M12x35	18	78	4~M8
CB-65	185	145	120	100	170	133.4	-	6	50	66	13.5	9	21.5	32	M75x2	6~M12x40	20	73.5	4~M8
CB-65 A6	165	145	120	111	-	133.4	106.38	-	61	66	30.5	26	21.5	32	M75x2	4~M12x40	20	84.5	4~M8
CB-65 A8	207	145	120	107	-	171.4	139.72	-	57	66	26.5	22	21.5	32	M75x2	4~M16x40	24	80.5	4~M8
CB-80	235	175	150	112	220	171.4	-	5	37	82.5	14	8	25	32	M85x2	6~M16x30	22	87	6~M10
CB-80 A8	210	175	150	125	-	171.4	139.72	-	50	82.5	27	21	25	32	M85x2	6~M16x50	24	100	6~M10



Application/customer benefits

- Clamping push with the backgauge block mechanism, collet will not be pushed, can precise positioning for workpiece length, make the precision of the length control more precise.
- Match Autogrip Rubber collet, clamping direction perpendicular to axis, never occur that situation of collet push workpiece.
- Backgauge block and cover able to interchangeable use, as well as application and chip-proof function.



\* Subject to technical changes.

COLLET CHUCKS

Specifications

Model	Plunger stroke (mm)	Max. Chucking Capacity (mm)			Max. D.B. pull kN (kgf)	Max. clamping force kN (kgf)	Max. speed $\text{min}^{-1}$ (r.p.m.)	Weight (kg)	Matching Stell Collet	Matching cyl.	Max. pressure MPa (kgf/cm <sup>2</sup> )
		Round	Square	Hexagom							
CBE-42	4.5	4~42	7~30	7~36	34.3(3500)	78.4(8000)	7000	6	RG-42	TK-B846	2.8(28)
CBE-4212	4.5	4~42	7~30	7~36	34.3(3500)	78.4(8000)	7000	6	RG-42	TK-B846	2.8(28)
CBE-42A5	4.5	4~42	7~30	7~36	34.3(3500)	78.4(8000)	7000	6.3	RG-42	TK-B846	2.8(28)
CBE-42A6	4.5	4~42	7~30	7~36	34.3(3500)	78.4(8000)	7000	7.4	RG-42	TK-B846	2.8(28)
CBE-65	4.5	4~65	8~46	8~56	44.1(4500)	103(10500)	6000	9.3	RG-65	TK-1068	3.0(30)
CBE-6517	4.5	4~65	8~46	8~56	44.1(4500)	103(10500)	6000	8.6	RG-65	TK-1068	3.0(30)
CBE-65A5	4.5	4~65	8~46	8~56	44.1(4500)	103(10500)	6000	10.8	RG-65	TK-1068	3.0(30)
CBE-65A6	4.5	4~65	8~46	8~56	44.1(4500)	103(10500)	6000	9.5	RG-65	TK-1068	3.0(30)
CBE-65A8	4.5	4~65	8~46	8~56	44.1(4500)	103(10500)	6000	9.5	RG-65	TK-1068	3.0(30)

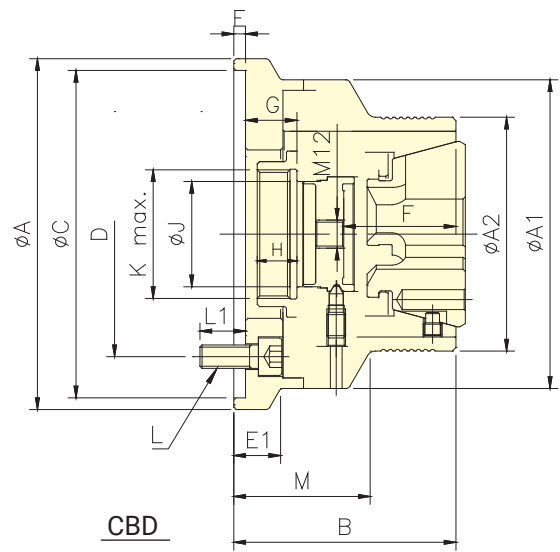
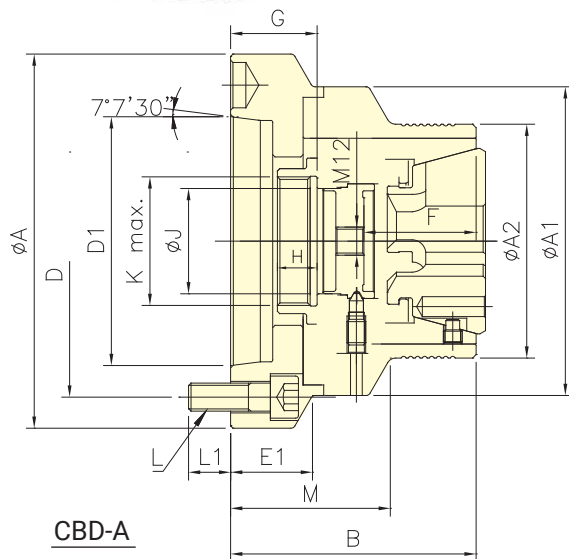
Dimensions

Model	A	A1	A2	B	C(H6)	D	D1	E	E1	F	G max.	G min.	H	J	K max.	L	L1	M
CBE-42	150	132	100	95	140	104.8	-	5	20	48	27.5	23	17	45	M55x2	4~M10x25	19.5	58
CBE-4212	132	132	100	95	120	100	-	5	-	48	27.5	23	17	45	M55x2	4~M10x25	19.5	58
CBE-42A5	132	132	100	105	-	104.8	82.56	-	-	48	37.5	33	17	45	M55x2	4~M10x30	16	68
CBE-42A6	160	132	100	105	-	133.4	106.38	-	35	48	37.5	33	17	45	M55x2	4~M12x35	18	68
CBE-65	157	157	122	116	140	104.8	-	6	-	56	40.5	36	17.5	68	M75x2	4~M10x30	18	74
CBE-6517	180	157	122	114	170	133.4	-	6	24	56	40.5	36	17.5	68	M75x2	4~M12x30	18	72
CBE-65A5	157	157	122	114	-	104.8	82.56	-	-	56	38.5	34	17.5	68	M75x2	4~M10x25	16	72
CBE-65A6	157	157	122	112	-	133.4	106.38	-	-	56	36.5	32	17.5	68	M75x2	4~M12x35	18.5	70
CBE-65A8	202	157	122	116	-	171.4	139.72	-	38	56	36.5	32	17.5	68	M75x2	4~M16x35	24	74



### Application/customer benefits

- Clamping push with the backgauge block mechanism, collet will not be pushed, can precise positioning for workpiece length, make the precision of the length control more precise.
- Match Autogrip Rubber collet, clamping direction perpendicular to axis, never occur that situation of collet push workpiece.
- Backgauge block and cover able to interchangeable use, as well as application and chip-proof function.



\* Subject to technical changes.

### Specifications

Model	Plunger stroke (mm)	Max. Chucking Capacity (mm)			Max. D.B. pull kN (kgf)	Max. clamping force kN (kgf)	Max. speed $\text{min}^{-1}$ (r.p.m.)	Weight (kg)	Matching Stell Collet	Matching cyl.	Max. pressure MPa (kgf/cm <sup>2</sup> )
		Round	Square	Hexagom							
CBD-65	4.5	4~65	8~46	8~56	44.1(4500)	103(10500)	6000	9.3	RG-65	TK-1068	3.0(30)
CBD-6517	4.5	4~65	8~46	8~56	44.1(4500)	103(10500)	6000	8.6	RG-65	TK-1068	3.0(30)
CBD-65A5	4.5	4~65	8~46	8~56	44.1(4500)	103(10500)	6000	10.8	RG-65	TK-1068	3.0(30)
CBD-65A6	4.5	4~65	8~46	8~56	44.1(4500)	103(10500)	6000	9.5	RG-65	TK-1068	3.0(30)
CBD-65A8	4.5	4~65	8~46	8~56	44.1(4500)	103(10500)	6000	9.5	RG-65	TK-1068	3.0(30)

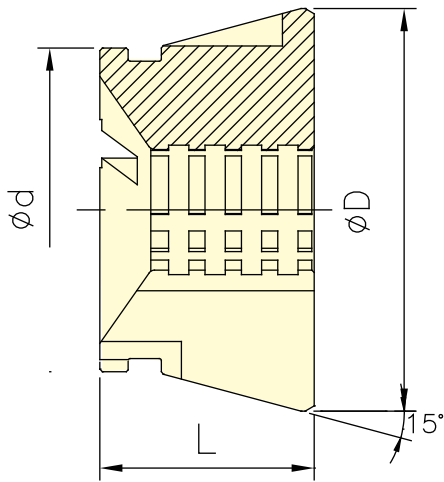
### Dimensions

Model	A	A1	A2	B	C(H6)	D	D1	E	E1	F	G max.	G min.	H	J	K max.	L	L1	M
CBD-65	157	157	122	114	140	104.8	-	6	-	54	35	30.5	17.5	68	M75x2	4~M10x30	18	72
CBD-6517	180	157	122	112	170	133.4	-	6	24	54	33	28.5	17.5	68	M75x2	4~M12x30	18	70
CBD-65A5	157	157	122	112	-	104.8	82.56	-	-	54	39	34.5	17.5	68	M75x2	4~M10x25	16	70
CBD-65A6	157	157	122	110	-	133.4	106.38	-	-	54	37	32.5	17.5	68	M75x2	4~M12x35	18.5	68
CBD-65A8	202	157	122	114	-	171.4	139.72	-	38	54	41	36.5	17.5	68	M75x2	4~M16x35	24	72

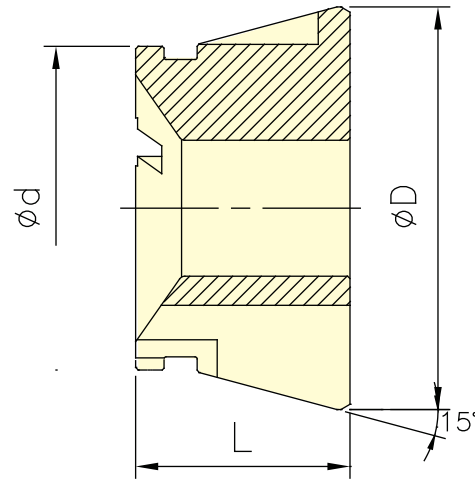


Application/customer benefits

- It is a rubber grip collet for push type or draw type collet chucks.
- Full gripping area: high rigidity, more gripping force.  
Gripping smoothly: prevent to damage the workpiece.
- More accurate than standard spring collets.  
Accuracy: With customized rubber grip collet, the accuracy can reach  $\pm 10\mu\text{m}$
- Grip Range:  $\pm 0.5\text{mm}$
- Quick change and easy.
- Dust-proof and swarf-proof design.



RG-RT



RG-R

Specifications

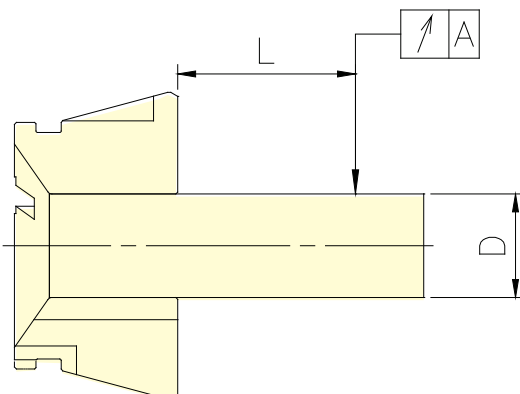
\* Subject to technical changes.

Model	Max. Chucking Capacity (mm) Round	d	D	L	Matching Collect Chuck
RG-42R	4~42	54	79.3	42	CB-42,CBE-42
RG-42RT	4~42	54	79.3	42	CB-42,CBE-42
RG-52R	4~52	66	79.3	46	CB-52,CBD-52,CBE-52
RG-52RT	4~52	66	79.3	46	CB-52,CBD-52,CBE-52
RG-65R	4~65	80	99.5	53	CB-65,CBD-65,CBE-65
RG-65RT	4~65	80	99.5	53	CB-65,CBD-65,CBE-65

Square and hex collets are made to order.

Dimensions

Test Bar D(S,H)	L mm	A DIN	
		Class1	Class2
3.0~6.0	16	0.015	0.02
6.0~10	25	0.015	0.02
10.0~18.0	40	0.02	0.03
18.0~24.0	50	0.02	0.03
24.0~30.0	60	0.02	0.03
30.0~50.0	80	0.03	0.04
50.0~60.0	100	0.03	0.04



Note01 : Collets chuck are conformed to DIN6343 Class2.

Note02 : AUTOGRIP's rubber grip collets are conformed to DIN6343 Class1.